

**R.M. OF SWIFT CURRENT NO. 137**

**BYLAW NO. 13-2017**

**A BYLAW OF THE RURAL MUNICIPALITY OF SWIFT CURRENT NO.137 TO AMEND ZONING BYLAW NO. 7-2015.**

The Council of the Rural Municipality of Swift Current No.137 in the Province of Saskatchewan in open meeting hereby enacts as follows:

**Item 1**

Bylaw No. 7-2015 is amended as hereinafter set forth.

**Item 2**


The Zoning District Map referred to in Appendix "A" forming a part of Bylaw No. 7-2015 is amended in the following manner:

- a) By rezoning Lot 15 of NW 4-16-13 W3M from AR (Agricultural/Resource) to RMH (Residential Mobile Home) and to rezone Parcel C of SE 5-16-13 W3M from HPC (High Profile Commercial/Light Industrial) to RMH (Residential Mobile Home) and to rezone Lots 13 and 14 of NW 4-16-13 W3M from CR1 (Country Residential 1) to RMH (Residential Mobile Home) as shown on the map that has been identified as being suitable for RMH (Residential Mobile Home).

**Item 3**

This bylaw shall come into force on the date of final approval by the Minister of Municipal Affairs.


  
 \_\_\_\_\_  
 Reeve

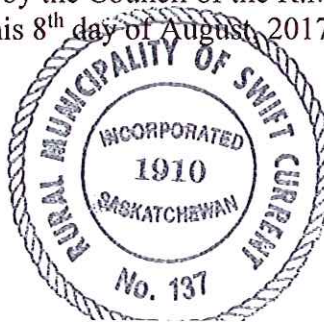
  
 \_\_\_\_\_  
 Administrator

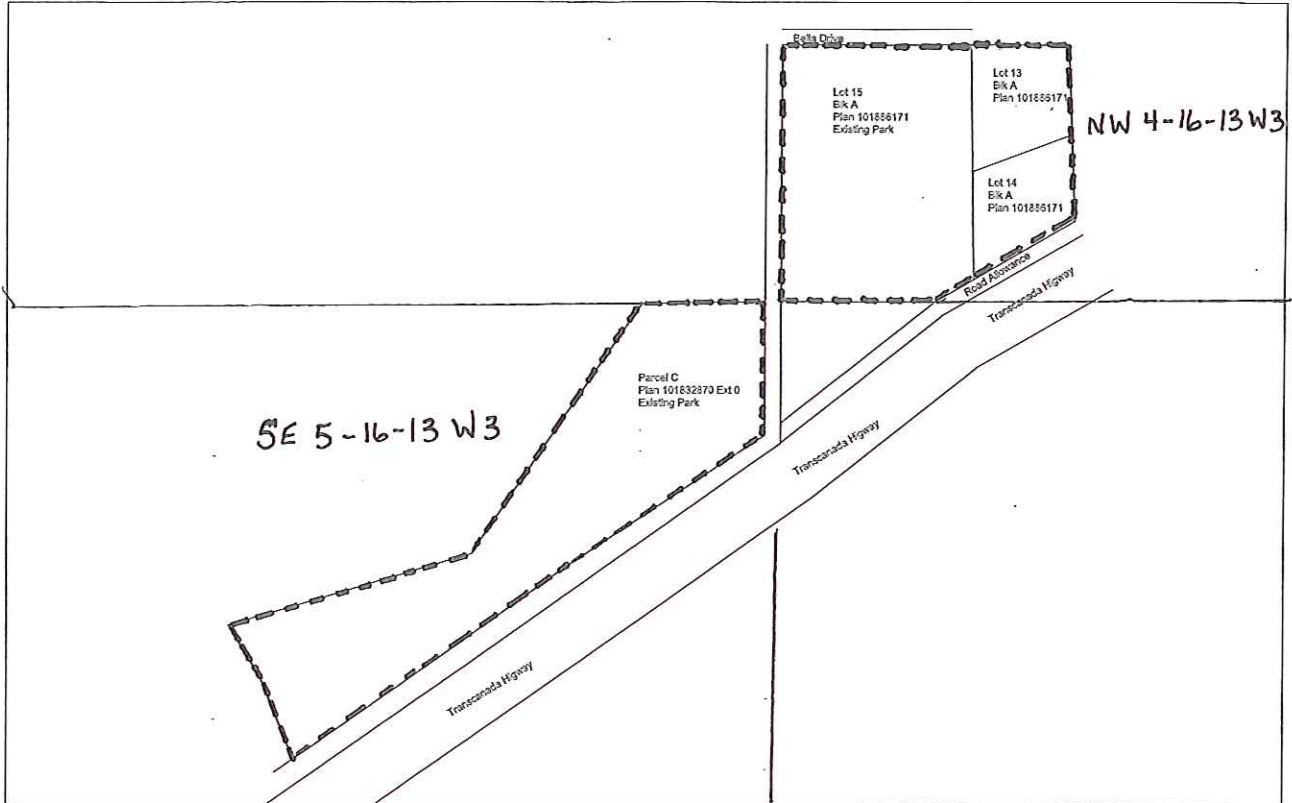


Read a first time this 13<sup>th</sup> day of June, 2017.  
 Read a second time this 8<sup>th</sup> day of August, 2017.  
 Read a third time this 8<sup>th</sup> day of August, 2017

Certified a true copy of a Bylaw passed by the Council of the R.M. of Swift Current No. 137 at a duly assembled meeting held this 8<sup>th</sup> day of August, 2017.

  
 \_\_\_\_\_  
 Administrator





This map forms part of Bylaw No. 13-2017.

*Linda Boser.*

Administrator

